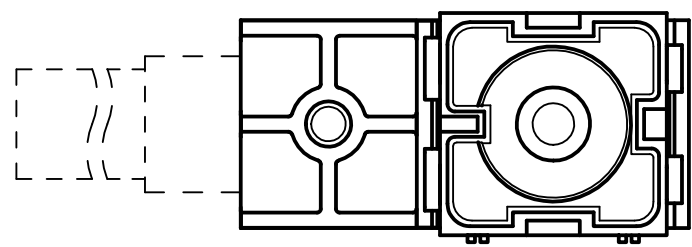
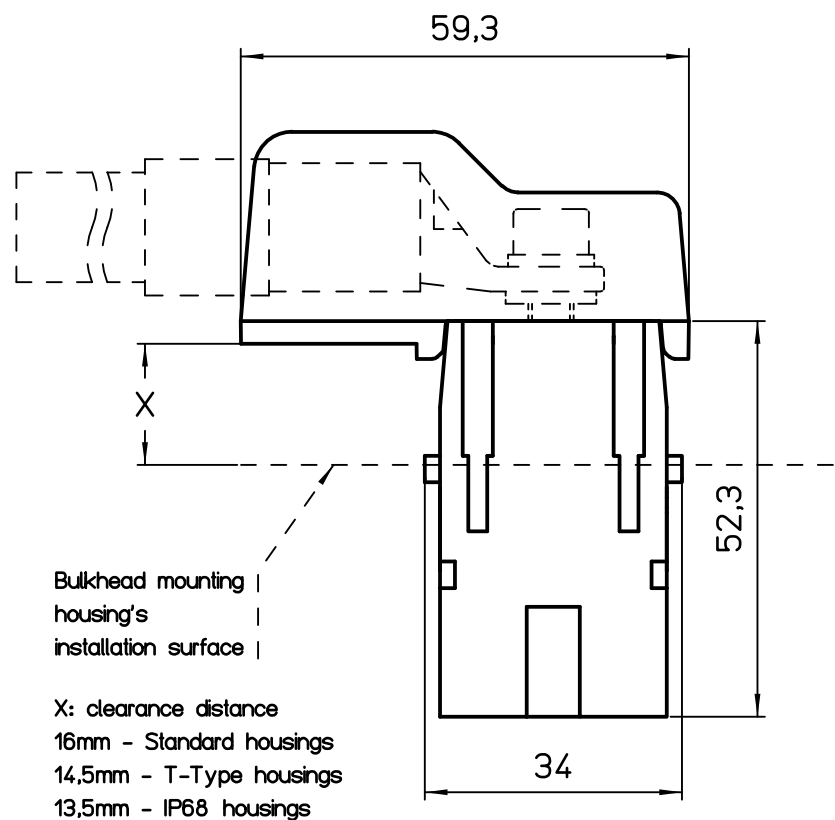
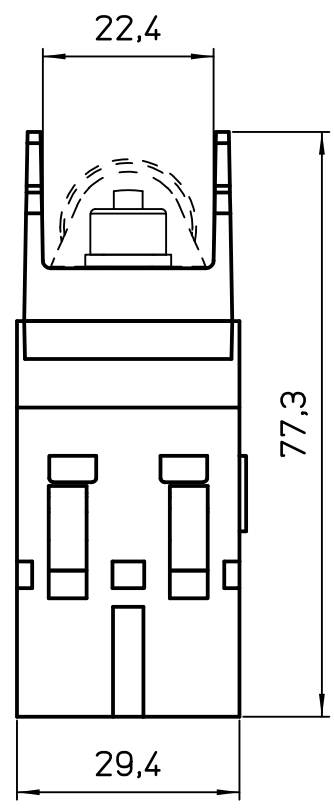


A



Diritti riservati All rights reserved

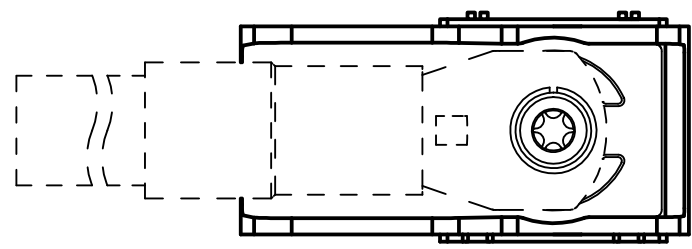
B



Bulkhead mounting housing's installation surface

X: clearance distance
 16mm - Standard housings
 14,5mm - T-Type housings
 13,5mm - IP68 housings

C



	Dimensions in mm
Original Size A4	
Date 02/02/22	
Sign. G. Renna	

Simplified representation with dimensions without tolerance

CX 01 YAM
 Male modular, screw, 90°-angled, 1P 200A 1000V

Scale
 1:1

